

# STRINGLAB

## alu tour LB

1,20 mm  
mono

temp 25°C - relative humidity 65%



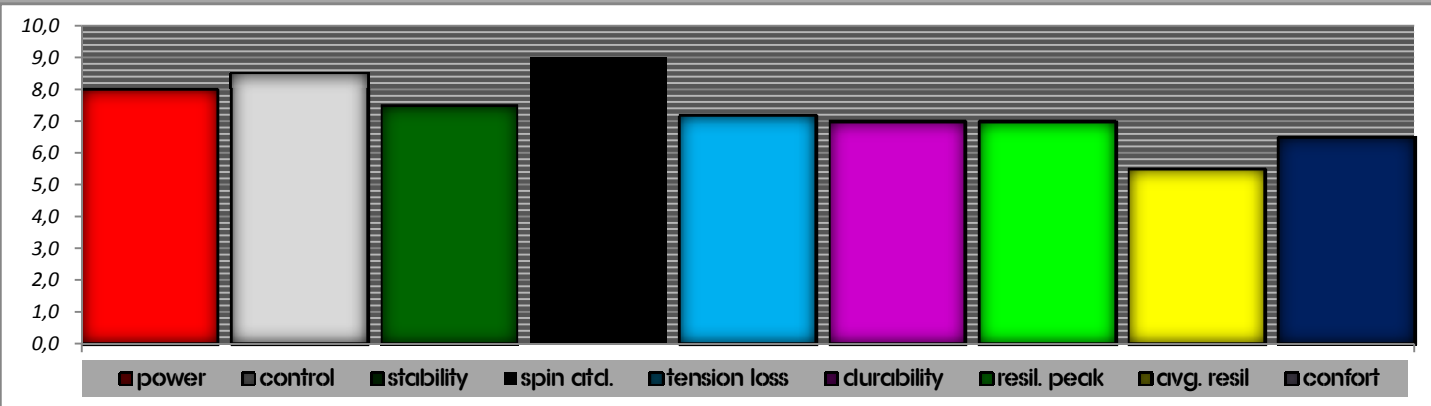
<b>POWER LEVEL</b>	671pnt	8,0/10	power attitude	
<b>CONTROL LEVEL</b>	1120pnt	8,5/10	control attitude	9,5/10 stiffness
<b>STABILITY LEVEL</b>	763pnt	7,5/10	stability attitude-consistency	
<b>SPIN POTENTIAL</b>	1,0	9,0/10		
<b>MAX RESILIENCE RANGE</b>	16kg	20kg	maximum resilience range	
<b>RECOMMENDED TENSION</b>	18kg	23kg		
<b>TENSION LOSS INDEX 300</b>	20%	7,5/10	tension loss after 300" - 5mins	
<b>PLAYING LIFE (tension-resilience)</b>	158%	7,0/10	dyn str life	8 - hrs 12 - hrs (approx.)

<b>RESILIENCE PEAK</b>	65kgmm	7,0/10	reactivity level:	medium
<b>AVERAGE RESILIENCE</b>	160kgmm	5,5/10	vs gut	4-cycles
<b>STRING PLANE STIFFNESS 22,5kg</b>		6,0/10	new	⇒ 10+/10 used
<b>STRING PLANE STIFFNESS 27,5kg</b>		10,5/10	new	⇒ 10+/10 used

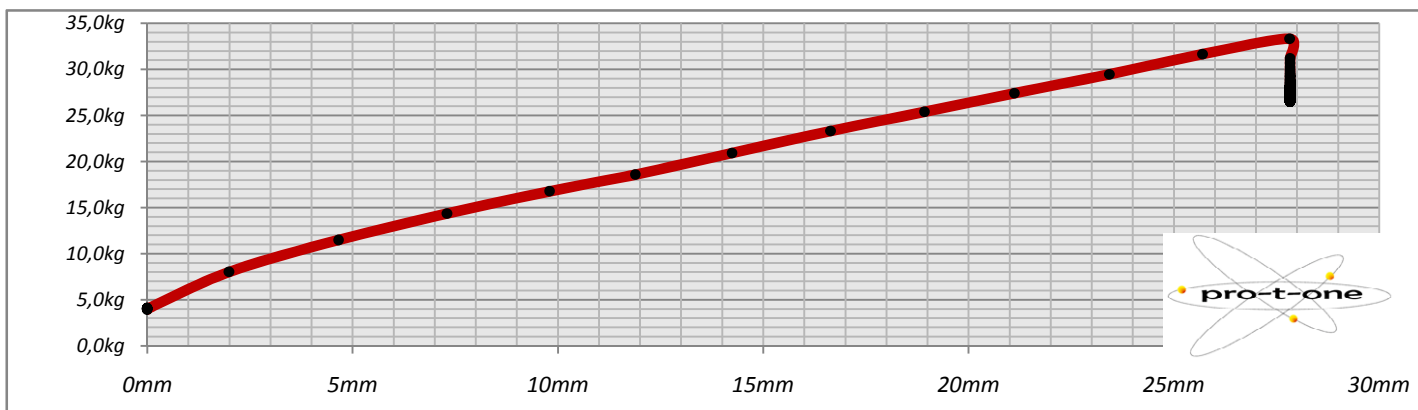
<b>PRESTRECH</b>	NO	recommended %	---	5%
<b>PROGRESSIVE PLASTICIZATION</b>	YES	def. plast.	2,2mm	5%

	kg/mm		kg/mm				
<b>STATIC STIFFNESS 10-15kg</b>	tough	1,25	new	128%	⇒	1,60	used
<b>STATIC STIFFNESS 15-20kg</b>	medium-tough	0,95	new	163%	⇒	1,55	used
<b>STATIC STIFFNESS 20-25kg</b>	medium-tough	0,95	new	158%	⇒	1,50	used
<b>STATIC STIFFNESS 25-30kg</b>	medium-tough	0,90	new	161%	⇒	1,45	used
<b>STATIC STIFFNESS 30-35kg</b>	medium-tough	0,90	new	161%	⇒	1,45	used
<b>AVG. STATIC STIFFNESS 15-30</b>	med-tough	0,93	kg/mm				

	g/mm				
<b>DYNAMIC STIFFNESS</b>	226	±2 g/mm	sample time 20ms		
	high	8,5/10	reference tension 20kg		
<b>STRING STIFFNESS EMULATOR</b>	235	±2 lb/inch	string length 325mm - deflection 10mm		
<b>ARM PROT - CONFORT LEVEL</b>	6,5/10	medium	5,9/10	7,5/10	

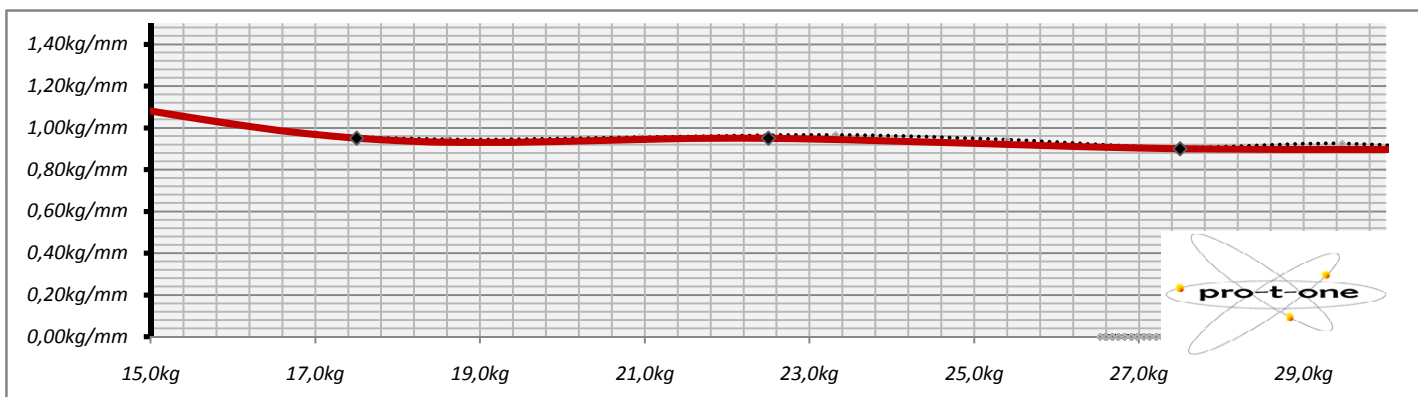


## DEFORMATION - LOAD DIAGRAM

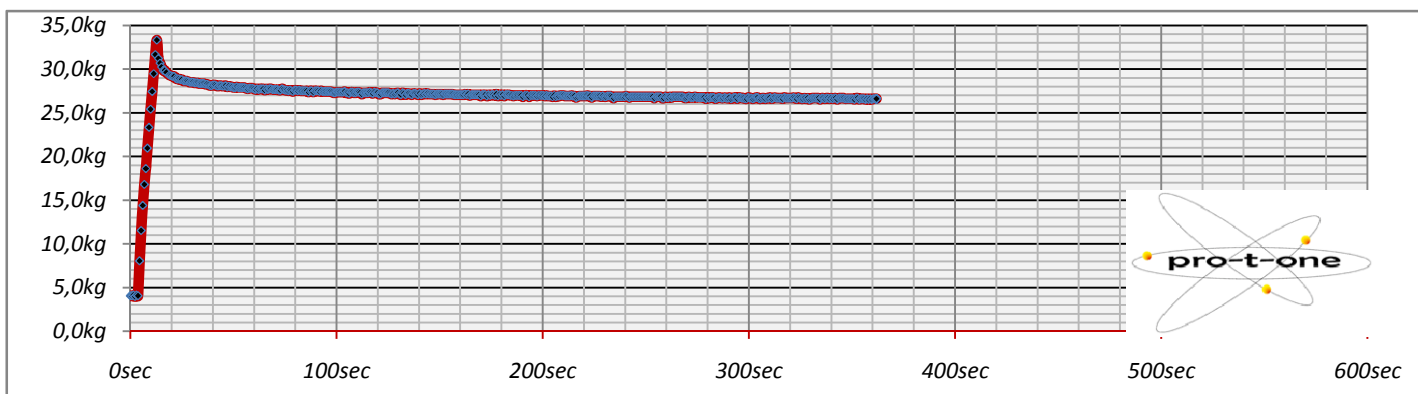


<b>STRINGLAB</b> <b>alu tour LB</b> <b>mono</b>	<b>1,20 mm</b>	<b>temp 25°C - relative humidity 65%</b>	
		<b>sample time</b>	<b>700-800ms</b>
		<b>starting length</b>	<b>300mm</b>
<b>static stiffness 10-15kg</b>	<b>1,25 kg/mm</b>	<b>static stiffness 20-25kg</b>	<b>0,95 kg/mm</b>
<b>static stiffness 15-20kg</b>	<b>0,95 kg/mm</b>	<b>static stiffness 25-30kg</b>	<b>0,90 kg/mm</b>

## STRING STATIC STIFFNESS MODULUS



## TENSION LOSS DIAGRAM



## HYSTERESIS DIAGRAM - LOAD AND UNLOAD CYCLES

